

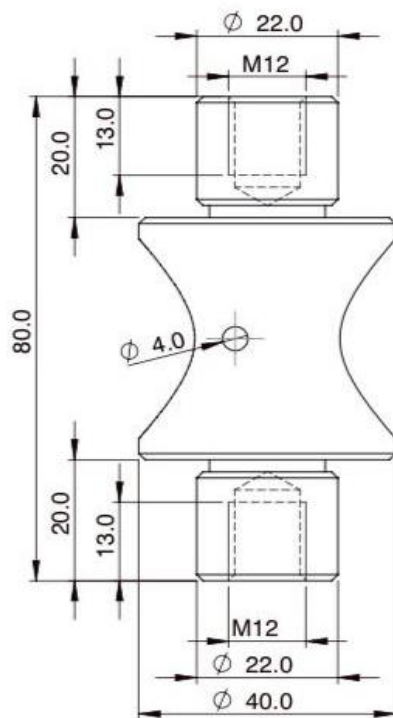
GCELL FARASOO TOWZIN

Model: TNS-1500



Special features:

- ✓ Alloy steel construction
- ✓ Tension or compression applications
- ✓ Nickel-plated
- ✓ Suitable for
Conversion scales, Hopper scales and other
Electronic weighing devices
- ✓ Compatible with **S** type load cell
- Up to 3000 d



SPECIFICATIONS		UNIT
Type	TNS	
Accuracy class acc. to OIML R60	C3	
Maximum capacity(E_{max})	1500	Kg
Max. numbers of load cell verification intervals(N_{LC})	3,000	
Combined error	$\leq \pm 0.02$	$\leq \pm 0.015$
Temperature effect on sensitivity (TK_c)	$\leq \pm 0.02$	$\leq \pm 0.015$
Temperature effect on minimum dead load output	$\leq \pm 0.02$	$\leq \pm 0.015$
Sensitivity (C_N)	$2 \pm 1\%$	
Min. load cell verification interval (V_{min})	5000	
Input resistance (black-blue)	700 ± 20	Ω
Output resistance (red-white)	700 ± 7	Ω
Nominal range of excitation voltage (B_u)	5.. 12	V_{DC}
Insulation resistance ($100 V_{DC}$)	>5	GΩ
Compensated temperature range	-10 .. +40	$^{\circ}C$
Operating temperature range	-40 ..+80	$^{\circ}C$
Limit load (E_L)	150	% of E_{max}
Breaking load (E_D)	200	% of E_{max}
Protection grade	IP67	
Cable length	3	m
Material: measuring body + housing	Alloy steel	