



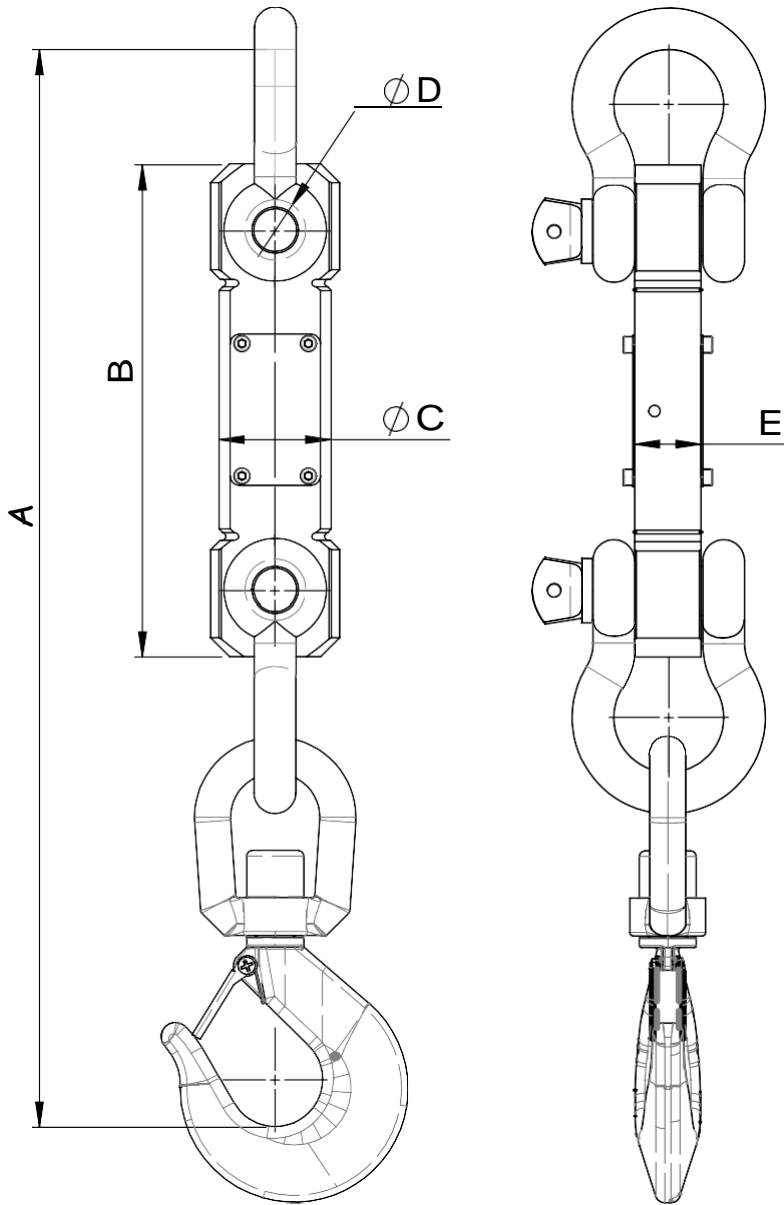
# GCELL FARASOO TOWZIN

## Model : CR 5t,10t,20t

Special features:

- ✓ Alloy steel Construction
- ✓ Direct mounting of Weight indicator
- ✓ IP67
- ✓ Crane load cell
- Up to 3000 d
- ✓ Standard shackle and hook

SPECIFICATIONS			UNIT
Type	<b>CR</b>		
Accuracy class acc. to OIML R60	C3		
Maximum capacity( $E_{max}$ )	5t	10t	20t
Max. numbers of load cell verification intervals( $N_{LC}$ )	3,000		
Combined error	$\leq \pm 0.02$	$\leq \pm 0.015$	
Temperature effect on sensitivity ( $TK_C$ )	$\leq \pm 0.02$	$\leq \pm 0.015$	
Temperature effect on minimum dead load output	$\leq \pm 0.02$	$\leq \pm 0.015$	
Sensitivity ( $C_N$ )	$1 \pm 1\%$		
Input resistance (black-blue)	$700 \pm 20$		
Output resistance (red-white)	$700 \pm 7$		
Nominal range of excitation voltage( $B_U$ )	5.. 12		
Insulation resistance (100 $V_{DC}$ )	>5		
Compensated temperature range	-10 .. +40		
Operating temperature range	-40 ..+80		
Limit load ( $E_L$ )	150		
Breaking load ( $E_D$ )	200		
Material: measuring body + housing	Alloy steel		



	DIMENSIONS (MM)		
	CR-5t	CR-10t	CR-20t
A	570	740	1060
B	260	270	340
C	59	70	100
D	28	38	54
E	35	49	70